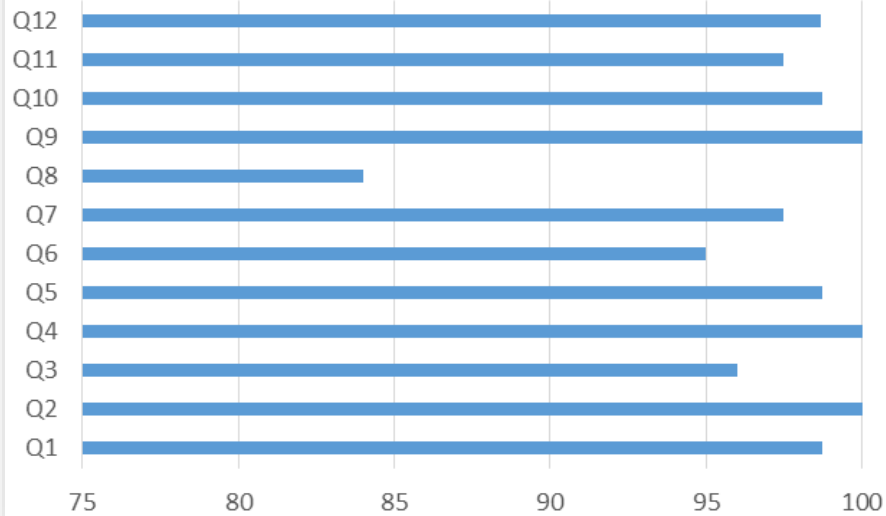


Parent View Paper Returns May 15



Blue returns are 81 paper returns from parents that didn't want to do on line.

Green is on line plus paper returns = 172 responses

- 1. My child is happy at this school
- 2. My child feels safe at this school
- 3. My child makes good progress at this school
- 4. My child is well looked after at this school
- 5. My child is taught well at this school
- 6. My child receives appropriate homework for their age
- 7. This school makes sure its pupils are well behaved
- 8. This school deals effectively with bullying
- 9. This school is well led and managed
- 10. This school responds well to any concerns I raise
- 11. I receive valuable information from the school about my child's progress
- 12. Would you recommend this school to another parent?

Parent View - May 15

